

Nuclear Physics

Jacopo Tissino

June 2019

1 Introduction

Things to remember about nuclear units: $\hbar c \approx 197 \text{ MeVfm}$ and $\text{MeVfm} = 10 \text{ eV\AA}$; there are weird things like $e^2 = 1.44 \text{ MeVfm}$, $4\pi\epsilon_0 = 1$. The atomic mass unit is equal to 931.5 MeV .

We have indetermination both between position and momentum: $\Delta x \Delta p \geq \hbar/2$ and between time and energy: $\Delta E \Delta t \geq \hbar/2$.

We can characterize the atomic particles by mass m , charge q , spin s , half-life and mean charge radius $\langle \rho r^2 \rangle \sqrt{c}$: this last quantity is of the order 0.87 fm for the proton, and -0.1 fm for the neutron.

2 Nuclear density

It is roughly constant up to some radius, then it decays. The proper way to write it would be to sum the modulus square of the wavefunction ψ_i of every nucleon:

$$\rho(r) = \sum_i |\psi_i(r)|^2 \quad (2.1)$$

We can approximate it as a radial distribution

$$\rho(r) \sim \frac{\rho_0}{1 + \exp\left(\frac{r-r_0}{a}\right)} \quad (2.2)$$

where $\rho_0 \approx 0.15 \div 0.2 \text{ nucleons/fm}^3$ is the approximately constant density in the central region, $r_0 \approx 1.20 \div 1.25 \text{ fm} A^{1/3}$ is the approximate radius of the nucleus (corresponding to where the density becomes half of ρ_0), $a \approx 0.65 \div 0.7 \text{ fm}$ is the *diffusivity*, which quantifies the length scale at which the density distribution goes to zero.

Taking $r_0 \approx 1.2 \text{ fm}$, we can estimate the nucleon density

$$\rho_0 \approx \frac{A}{V} = \frac{A}{\frac{4}{3}\pi(r_0 A^{1/3})^3} \approx 0.138 \text{ fm}^{-3} \quad (2.3)$$

and the corresponding mass density will be $\approx 129 \text{ MeV/fm}^3$ corresponding to $2.3 \times 10^{17} \text{ kg/m}^3$, which is huge when compared to, say, that of a block of Osmium, which is around $2.26 \times 10^5 \text{ kg/m}^3$.

There are also asymmetric effects, such as a skin of neutrons in the outermost part of the nucleus or a halo, which extends much further than a skin. This can be seen by looking at the differences in the scattering cross section $\sigma \approx \pi r_0^2$.

We distinguish the nuclei by the proton number Z , the neutron number N and their sum $A = N + Z$. They are written as ${}^A_Z[\text{X}]$.

- Isotopes have the same Z , ${}^{235}\text{U}$ and ${}^{233}\text{U}$;
- Isobares have the same A , ${}^{44}\text{Ca}$ and ${}^{44}\text{Ti}$;
- Isotones have the same N , ${}^{40}\text{Ca}$ and ${}^{38}\text{Ar}$;

- Isomers have the same Z and N , but are in different excitation states. We require them to be somewhat stable, with half-life $\gtrsim 10^{-12}$ s, ^{99}Tc and ^{99m}Tc .

We also define specular nuclei: denoting the nuclear numbers as (N, Z) , (a, b) is isobaric and specular to (b, a) .

At the driplines, the excess nucleons are not bound (the effective potential they are in does not have a minimum).

^8B and ^8Be are isobares.

^{19}F is an isotone to ^{17}F .

The stable isotopes of Samarium are those with $A = 144, 150, 152, 154$.

The specular nuclide to ^{11}Li would be ^{11}O , but it does not seem to exist.

The mass of a nuclide is given by

$$M(A, Z) = Zm_p + (A - Z)m_n - B(A, Z) \quad (2.4)$$

where B is the binding energy. It is a good first approximation to say $B/A \approx \text{const}$, around 8 MeV.

Actually, this value increases up to iron, then very slowly decreases, with slight bumps at magic numbers.

3 Waterdrop model

A nucleus is similar to a water droplet, like:

- $\nabla \cdot \vec{v} = 0$ and similarly the nucleons are roughly incompressible, maintaining a constant density inside the nucleus;
- The evaporation heat of a water drop is directly proportional to its mass, and similarly we can approximate $B \propto A$;
- The water molecules are held together by intermolecular Van der Waals forces, with expressions like $r^{-12} - r^{-6}$, and similarly the strong nuclear force has a short range.

We can write a Semi Empiric Mass Formula, which will give us the best estimate of the waterdrop model for the nuclear mass. We will assume that the nuclear forces *saturate* after a certain point, that is, they have finite support.

Volume term The full potential is

$$V = \sum_{i < j} V_{ij}(|r_i - r_j|) \quad (3.1)$$

so if the nuclear force was long-range we would have $B \propto A(A - 1) \langle V \rangle$, since the terms in the sum (3.1) are $A(A - 1)/2$ (by $\langle V \rangle$ I mean the average binding energy in a nucleon pair).

We must account for the fact that the nucleons only interact with their neighbours in some fixed volume V_{int} : so

$$B \propto \underbrace{\frac{A(A - 1)V_{\text{int}}}{V_{\text{total}}}}_{\propto A} \propto A - 1 \sim A \quad (3.2)$$

So our first term will be

$$B \sim a_V A \quad (3.3)$$

Surface term The surface nucleons interact with less nucleons than the internal ones. This effect will surely be negative and proportional to the surface area, and we are only interested in proportionality, so

$$B \sim a_V A - a_S A^{2/3} \quad (3.4)$$

Coulomb term The positively charged nucleons repel each other: we model the nucleus as a uniformly charged sphere, which will have charge density $\rho = 3Ze / (4\pi R^3)$, where R is the radius of the nucleus. Applying $\nabla \cdot E = \rho / \epsilon_0$ and integrating over a sphere of radius r , we get

$$E(r) = \begin{cases} \frac{Zer}{4\pi\epsilon_0 R^3} = \frac{\rho r}{4\epsilon_0} & r \leq R \\ \frac{Ze}{4\pi\epsilon_0 r^2} = \frac{\rho R^3}{3\epsilon_0 r^2} & r \geq R \end{cases} \quad (3.5)$$

The energy density of the electric field is given by $u = \epsilon_0 E^2 / 2$; its integral over all of space $U = 4\pi \int_0^\infty u r^2 dr$, which corresponds to the Coulomb term to subtract to the binding energy, can be calculated analytically, and is the sum of the external and internal contributions:

$$U = \left(1 + \frac{1}{5}\right) \frac{(Ze)^2}{8\pi\epsilon R} \quad (3.6)$$

Then we can put all the constants into a term, leaving out only the proportionalities to Z^2 and $R^{-1} \propto A^{-1/3}$. Now our formula is:

$$B \sim a_V A - a_S A^{2/3} - a_C Z^2 A^{-1/3} \quad (3.7)$$

with

$$a_C = \frac{3}{5} \frac{e^2}{4\pi\epsilon_0} \frac{1}{r_0} \approx 0.7 \text{ MeV} \quad (3.8)$$

which can be found by recalling $e^2 = e^2 / (4\pi\epsilon_0) \approx 1.44 \text{ MeV fm}$ and $r_0 \approx 1.2 \div 1.3 \text{ fm}$.

It might be more accurate for this term to be proportional to $Z(Z-1)$, since the proper expression for the energy will be:

$$U = \frac{e^2}{4\pi\epsilon_0} \sum_{i=1}^Z \sum_{j < i} \frac{1}{|r_i - r_j|} \propto \frac{Z(Z-1)}{|\bar{r}|} \propto \frac{Z(Z-1)}{A^{1/3}} \quad (3.9)$$

where \bar{r} is the average distance between the protons in the nucleus. We do not know what it looks like, but surely $\bar{r} \propto r_{\text{nucleus}} \propto A^{1/3}$.

Asymmetry term The binding energy between pp is similar to that between nn , let us call it v , but it is smaller than the pn attraction by a factor ~ 2 , so let us call the np energy $2v$. This can be seen empirically from the fact that nn and pp are not bound states, while the deuteron (${}^2\text{H}$) is. The factor is around 2 because of the Pauli exclusion principle: nucleons are spin-1/2 fermions, so if their spins and isospins are the same they cannot come near one another: the spins will be aligned around half of the times that the isospins are aligned, so this justifies the factor of 2.

The asymmetry term becomes relevant for large A .

When counting the total binding energy we must divide by A to account for the fact that every nucleon only interacts with its neighbours.

$$B_A = \frac{Nv}{A}(N+2P) + \frac{Pv}{A}(2N+P) \quad (3.10a)$$

$$= \frac{v}{A}(N^2 + P^2 + 4NP) \quad (3.10b)$$

$$= \frac{v}{2A}(3N^2 + 3P^2 + 6NP - N^2 - P^2 + 2NP) \quad (3.10c)$$

$$= \frac{v}{2A}(3A^2 - (N-Z)^2) \quad (3.10d)$$

The linear term in A is the volumetric term; the term to add is $\propto (N-Z)^2 / A$. So now we have

$$B \sim a_V A - a_S A^{2/3} - a_C Z^2 A^{-1/3} - a_A \frac{(N-Z)^2}{A} \quad (3.11)$$

This can be also seen by approximating the nucleus as a Fermi sea: if $N = Z$ all the nucleons can be at the Fermi energy ε_F , while if there is a difference some of them will have more energy.

Take $N - Z = 4i$, with $i \in \mathbb{N}$, and imagine moving to this configuration from $i = 0$. The first two protons becoming neutrons will raise the energy of the nucleus by $2\Delta E$, where ΔE is the separation between the energy levels. The next step will take $6\Delta E$, and in general the $j + 1$ -th will take $2(2j + 1)\Delta E$: we need to add these up,

$$\sum_{j=1}^i 2(2j + 1)\Delta E = 2i^2\Delta E = 2\frac{(N - Z)^2}{16}\Delta E \quad (3.12)$$

It can also be shown (CHECK LATER) that $\Delta E \propto 1/A$. Then we get the same formula as before.

Pairing term It is added to the formula to explain the experimental data: the term we need to add looks like

$$B_P = \frac{a_P}{A^{1/2}} \quad a_P = \begin{cases} +\delta & \text{even-even} \\ 0 & \text{even-odd} \\ -\delta & \text{odd-odd} \end{cases} \quad (3.13)$$

with $\delta \sim 11 \div 12$ MeV. It is due to the wavefunctions of the nuclides “pairing up” in some sense. The exponent being $1/2$ is not certain, some say $3/4$ fits the data better...

SEMF The full formula looks like

$$B \sim a_V A - a_S A^{2/3} - a_C Z^2 A^{-1/3} - a_A \frac{(N - Z)^2}{A} \pm \frac{a_P}{A^{1/2}} \quad (3.14)$$

with $a_V \approx 16$ MeV, $a_S \approx 17$ MeV, $a_C \approx 0.7$ MeV, $a_A \approx 23$ MeV, $a_P \approx 12$ MeV. It fits the data well, for $A > 10 \div 20$.

The empirical data do not exactly follow the SEMF: the binding energy is slightly higher at certain *magic numbers*.

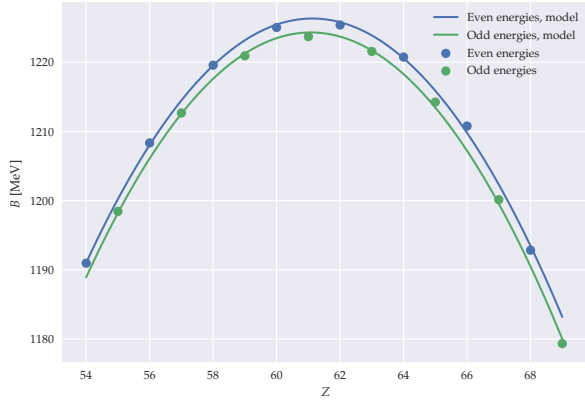
The highest binding energy per nucleon is found with ^{62}Ni ($B/A = 8.7945$ MeV), while the lowest mass per nucleon is found with ^{56}Fe . They can be different because they have different proton/neutron ratios.

Mass paraboles If we work at fixed A , the (3.14) looks like a parabola wrt Z . Actually, if A is even it looks like two parabolas, distanced 2δ apart, with the nuclides switching from one to the other as the parity of Z changes; if A is odd the nuclides are always even-odd so it is just one parabola. The asymmetry term is proportional to $(A - 2Z)^2$, so we get:

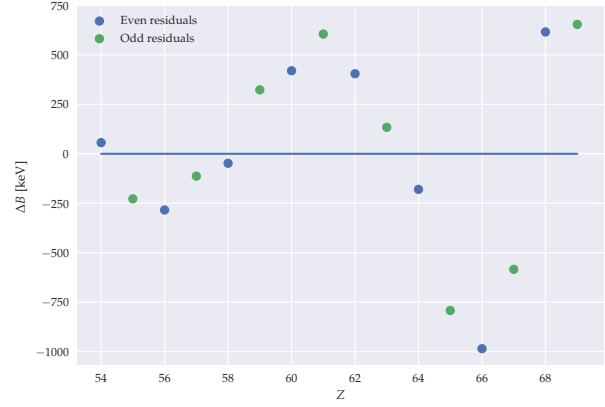
$$B = Z^2 \left(-a_C A^{-1/3} - \frac{4a_A}{A} \right) + Z(4a_A) + \text{const} \quad (3.15)$$

We perform a parabolic fit for the nuclei at $A = 148$, and compute the coefficients corresponding to the fit parameters according to formula (3.15). The results are shown in 1.

The fit parameters give $a_A = 21.41$ MeV, $a_C = 0.65$ MeV, $a_P = 12.26$ MeV. The energy at the vertex of the parabola can be calculated from the model assuming $a_V = 16$ MeV and $a_S = 17$ MeV to be 1340 MeV, while the real energy is 1225 MeV.



(a) Fit and raw data



(b) Residuals of the fit

Figure 1: Mass parabola fit

There are some odd-odd stable nuclei, like ^{14}N , but they are rare.

Specular nuclei If they have $\Delta Z = 1$ and A is odd, interesting things happen. Our working example is $^{15}_8\text{O}_7$ and $^{15}_7\text{N}_8$.

The only term which changes in the SEMF between them is the Coulomb term: their Z s are $(A \pm 1)/2$, therefore (applying the corrected Coulomb formula given in (3.9)) their difference in energy is given by

$$\Delta B = \frac{a_C}{A^{1/3}} \left(\frac{(A+1)(A-1)}{4} - \frac{(A-1)(A-3)}{4} \right) \quad (3.16a)$$

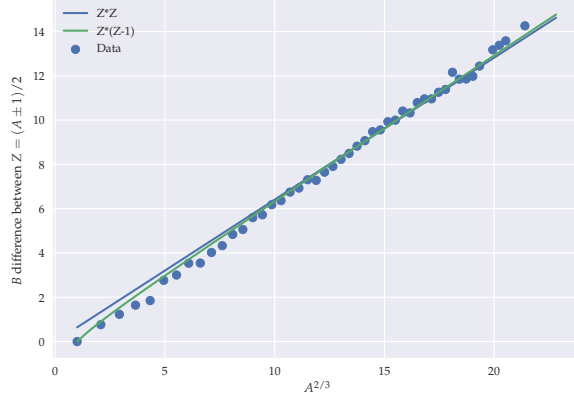
$$= \frac{a_C}{A^{1/3}} \left(\frac{4A-4}{4} \right) \quad (3.16b)$$

$$= a_C (A^{2/3} - A^{-1/3}) \quad (3.16c)$$

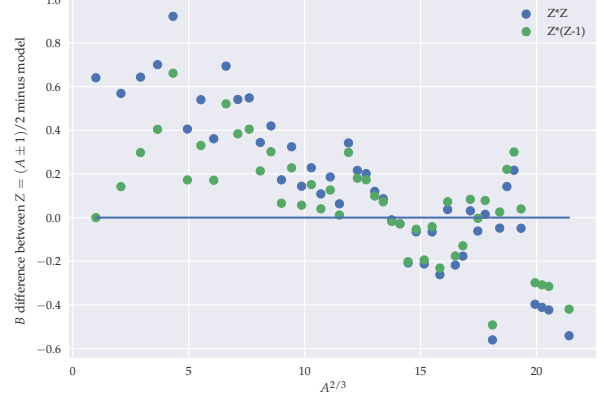
We can plot the data for ΔB wrt $x \stackrel{\text{def}}{=} A^{2/3}$. The plot will be of the form

$$\Delta B = a_C x - \frac{a_C}{\sqrt{x}} \quad (3.17)$$

The fit works, giving us $a_C = (631 \pm 5)$ keV in this parametrization.



(a) Fit



(b) Residuals

Figure 2: Fit of the difference in B between symmetric nuclei. The chi square is 0.136 MeV^2 for the Z^2 model, and 0.062 MeV^2 for the $Z(Z - 1)$ model.

4 Fermi gas model

Hypotheses

- The nucleons are spin $1/2$ fermions;
- the nucleons' collective actions can be represented with a spherically symmetric potential well $U(r)$, extended in a radius $R = r_0 A^{1/3}$;
- the nucleon gas is degenerate: the kinetic energy of the nucleons is much less than the thermal energy $k_B T$.

The proper Hamiltonian, without the mean-field approximation, would be

$$H = \sum_i T_i + \sum_{i < j} V_{ij}(|r_i - r_j|) \quad (4.1)$$

instead, we use

$$H_{\text{sp}} = -\frac{\hbar^2 \nabla^2}{2\mu} + U(r) \quad (4.2)$$

where sp means 'single particle', $\mu^{-1} = m_{\text{sp}}^{-1} + m_{\text{nucleus}}^{-1}$.

For nuclei at human temperatures, $\lesssim 10^3 \text{ K}$, we have energies $\lesssim \frac{3}{2} k_B T = 0.13 \text{ eV} \ll \text{MeV}$, so thermal motion is negligible.

1D infinite well We have an infinite well from $-a/2$ to $a/2$, and inside it a particle of mass m .

The solutions to the time-independent Schrödinger equation are in the form

$$\psi(x) = A \sin(kx) + B \cos(kx) \quad (4.3)$$

where $k^2 = 2mE/\hbar^2$ is the square of the wavenumber, which is directly proportional to the momentum $k = p/\hbar = 2\pi/\lambda$. We must also consider the boundary conditions: the domain of the Hamiltonian is $\{\psi(x) \in L^2 \mid \psi(\pm a/2) = 0\}$.

So we have two classes of solutions, proportional to either $\cos((2q)\pi x/a)$ or $\sin((2q+1)\pi x/a)$ with $n \in \mathbb{N}$. If we call the even or odd number $2q(+1) = n_x$, the energy comes out to be

$$E = \frac{\hbar^2 k^2}{2m} = \frac{\hbar^2 n_x^2}{8ma^2} \quad (4.4)$$

3D potential well The problem works out analogously, with

$$E = \frac{h^2}{8ma^2} \sum_i n_i^2 \quad (4.5)$$

so we work in the space $\mathbb{Z}_+^3 \ni \vec{n}$, where same-energy states live in spherical shells.

The differential number of states in these shells is (approximately) given by the volume of the shell, which is an eighth of the sphere's: $N = \frac{1}{8} 4\pi n^2 dn$. This can also be written as $\rho(E) dE$, that is, it corresponds to a density of states.

Then, since the energy is just a function of n , we have

$$dE = \frac{h^2}{8ma^2} d(n^2) = \frac{h^2}{4ma^2} n dn \quad (4.6)$$

Therefore we can substitute in:

$$\rho(E) dE = \frac{\pi}{2} \underbrace{n}_{\sqrt{8ma^2E/h^2}} \underbrace{n dn}_{4ma^2/h^2 dE} = \frac{2\pi (2ma^2)^{3/2}}{h^3} \sqrt{E} dE \quad (4.7)$$

and we can also express this wrt $p = \sqrt{2mE}$; its differential is $p dp = m dE$:

$$\rho(E) dE = \rho(p) dp = V \frac{4\pi a^3 p^2 dp}{h^3} \quad (4.8)$$

Where $a^3 = V$ is the volume, and since we treat a spherically symmetric problem we can rewrite it as $V = \frac{4}{3}\pi r_0^3 A$. Then, we put two fermions in each shell, thus getting N particles in total.

$$dN = 2\rho(p) dp = \frac{4}{3\pi} \frac{r_0^3 p^2}{h^3} A dp \quad (4.9)$$

Fermi sea This probability density must be normalized: let us consider the protons first. If their occupation is maximal up to p_F and null after, it must be

$$Z = \int_0^{p_F} 2\rho(p) dp = \int_0^{p_F} \frac{4}{3\pi} \frac{r_0^3 p^2}{h^3} A dp = \frac{4A}{9\pi} \frac{r_0^3 p_F^3}{h^3} \quad (4.10)$$

Turning this around gives

$$p_{FC} = \frac{\hbar c}{r_0} \sqrt[3]{\frac{9\pi}{8} \frac{2Z}{A}} \quad (4.11)$$

and we can find a similar result for the neutrons. Note that, if the nucleus is close to being symmetric, p_F only depends on $r_0 \propto \rho_0 = A/V$, not on A or V re

For light nuclei we can assume $2Z/A \approx 1$, and we know that $r_0 \approx 1.25$ fm. Then $p_F \approx 240$ MeV/c and $E_F \approx 31$ MeV/c²

If we assume that $V = E_F + B/A$ (as in, if we were to remove one nucleon at a time we would on average find them at the energy $-B/A$) we find that the potential well is around 40 MeV deep.

One more prediction of this model is that, for heavy nuclei with $N > Z$, $E_{F_N} > E_{F_p}$; the magnitude of the difference is around 32 vs 28 MeV for Uranium.

Isospin We consider nucleons as different manifestations of a single particle, with different eigenvalues for the z component of an operator \vec{T} , which has algebra $\mathfrak{su}(2)$. So, we assume that the nucleon is an isospin-1/2 particle (that is, the eigenvalue of T^2 is $3\hbar^2/4 = \hbar^2 i(i+1)$).

Average kinetic energy We have computed the state distribution differential dN , with $\int dN = A$ in equation (4.9). It is useful to split the neutron and proton contributions since in heavy nuclei their numbers differ significantly. For both of them we can find:

$$\langle E_k \rangle = \frac{1}{A} \int_0^A p^2 / (2m) dN = \frac{1}{A} \int_0^{p_F} \frac{p^2}{2m} \frac{4}{3\pi} \frac{r_0^3 p^2}{\hbar^3} A dp = \frac{4}{3\pi} \frac{r_0^3}{\hbar^3} \int_0^{p_F} \frac{p^4}{2m} dp \quad (4.12)$$

so adding their contributions we get

$$\langle E_k \rangle = \frac{4r_0^3}{3\pi\hbar^3} \left(\frac{p_{F_p}^5}{10m_p} + \frac{p_{F_n}^5}{10m_n} \right) \quad (4.13)$$

and we can substitute in the formula for the Fermi momentum (4.11), and approximate $m \approx m_n \approx m_p$: we get

$$\langle E_k \rangle = \frac{4r_0^3}{30m\pi\hbar^3} \left(\left(\frac{\hbar}{r_0} \sqrt[3]{\frac{9\pi}{8} \frac{2Z}{A}} \right)^5 + \left(\frac{\hbar}{r_0} \sqrt[3]{\frac{9\pi}{8} \frac{2(A-Z)}{A}} \right)^5 \right) \quad (4.14a)$$

$$= \frac{3^{7/3}}{80} \frac{\pi^{2/3} \hbar^2}{80Amr_0^2} \left(\left(\frac{2Z}{A} \right)^{5/3} + \left(\frac{2(A-Z)}{A} \right)^{5/3} \right) \quad (4.14b)$$

Now, $2Z/A$ is approximately 1, so we can do a series expansion! $2Z/A \approx 1 + x$, where $x = (2Z - A)/A$. We can use $(1+x)^{5/3} + (1-x)^{5/3} = 2 + 10x^2/9 + O(x^3)$. So,

$$\langle E_k \rangle = \frac{3^{7/3}}{80} \frac{\pi^{2/3} \hbar^2}{40Amr_0^2} \left(1 + \frac{5}{9} \left(\frac{2Z - A}{A} \right)^2 \right) \quad (4.15)$$

5 Nuclear fission

Ellipsoid deformations The nucleus is approximately spherical, but we can model its oscillations as having an axis of rotational symmetry, thus having the shape of an ellipsoid. We call its two equal axes b and its different axis a . If $a > b$ the ellipsoid is prolate, otherwise it is oblate.

Since the volume is conserved, if $R = a = b$ is the spherical configuration, a small perturbation of it must look like $a = R(1 + \varepsilon)$, $b = R(1 + \varepsilon)^{-1/2}$.

Calculations show that the surface increases like $4\pi R^2 \rightarrow 4\pi R^2 (1 + (2/5)\varepsilon^2 + O(\varepsilon^3))$, therefore $A^{2/3} \rightarrow (1 + (2/5)\varepsilon^2) A^{2/3}$; we will also need the fact that $A^{-1/3} \rightarrow (1 - (1/5)\varepsilon^2) A^{-1/3}$.

The part of the SEMF that changes looks like

$$B = -a_S A^{2/3} - a_C \frac{Z^2}{A^{1/3}} + \text{const} \rightarrow -a_S A^{2/3} \left(1 + \frac{2}{5} \varepsilon^2 \right) - a_C \frac{Z^2}{A^{1/3}} \left(1 - \frac{1}{5} \varepsilon^2 \right) + \text{const} \quad (5.1)$$

so we can compute the difference $B_{\text{new}} - B_{\text{old}} = \Delta B$:

$$\Delta B = A^{2/3} \left(-a_S \frac{2}{5} \varepsilon^2 + a_C \frac{Z^2}{A} \frac{1}{5} \varepsilon^2 \right) = A^{2/3} \frac{\varepsilon^2}{5} \left(-2a_S + a_C \frac{Z^2}{A} \right) \quad (5.2)$$

this changes sign, becoming positive, for $a_S/a_C < Z^2/(2A)$. The ratio of the constants is known and approximately equal to $2a_S/a_C \approx 49$. At that point, becoming more elliptical corresponds to gaining energy, so the nucleus is unstable and will fission.

The inequality is reached around $Z \approx 114$, $A \approx 270$. This is not the limit seen experimentally: nuclei fission as early as $Z^2/A \approx 35$, but it gives a good theoretical justification of the fact that after a certain point we do not find any more stable nuclei.

Nuclear fission $^{235,238}\text{U}$ fission spontaneously, around 10^{-9} to 10^{-5} of the times they alpha-decay.

In fission from ^{238}U to $A \approx 119$ nuclei around 200 MeV of energy is emitted.

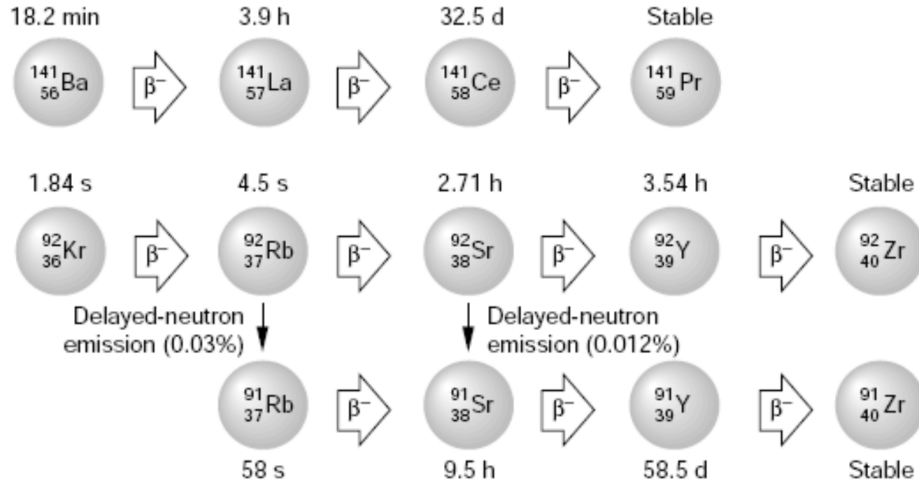


Figure 3: Barium decay chain

Neutron capture causing change in Z It works like this: the atom (say, ^{238}U) absorbs a neutron, becoming the excited $^{239*}\text{U}$; then, this nucleus emits gamma radiation becoming ^{239}U , finally it balances the neutron excess by decaying β^- and thus becoming ^{239}Np .

Neutron capture causing fission The capture of a neutron can make an atom unstable wrt deformation, and then it might tunnel through the potential barrier.

Since the N/Z ratio is higher in heavier nuclei, the fission products will not be stable with the amount of neutrons they end up with, so they will tend to emit neutrons.

Some atoms have low energy barriers for fission, which can be surpassed by ambient temperature neutrons with $E = k_B T_{\text{amb}} \approx 26 \text{ meV}$ (^{235}U is like this), while others need fast-moving neutrons (like ^{238}U).

The probability of a nucleus of mass A being emitted in symmetric nuclear fission is bimodal, with high regions around $A \approx 90$ and $A \approx 130$.

6 Nuclear Fusion

Nuclear fission reactions can have very high energy yields, but also have high activation energies because of the Coulomb barrier.

$$Q = - \sum_{\text{reagents}} E_i + \sum_{\text{products}} E_i \quad (6.1)$$

Between the first nuclear fusion reactions one can write, the highest in Q is $\text{d} + \text{d} \rightarrow {}^4\text{He} + \gamma$ with $Q \approx 24 \text{ MeV}$, while other reactions with protons and deuterons have $Q = 3 \div 5 \text{ MeV}$.

Coulomb barrier Its height is

$$V_C = \frac{e^2}{4\pi\epsilon_0} \frac{Z_1 Z_2}{R} \quad (6.2)$$

where R is the sum of the radii of the nuclei, a distance at which we assume the nuclear forces take over. For example, in the $\text{d} + \text{d}$ reaction, $V_C \approx 500 \text{ keV}$.

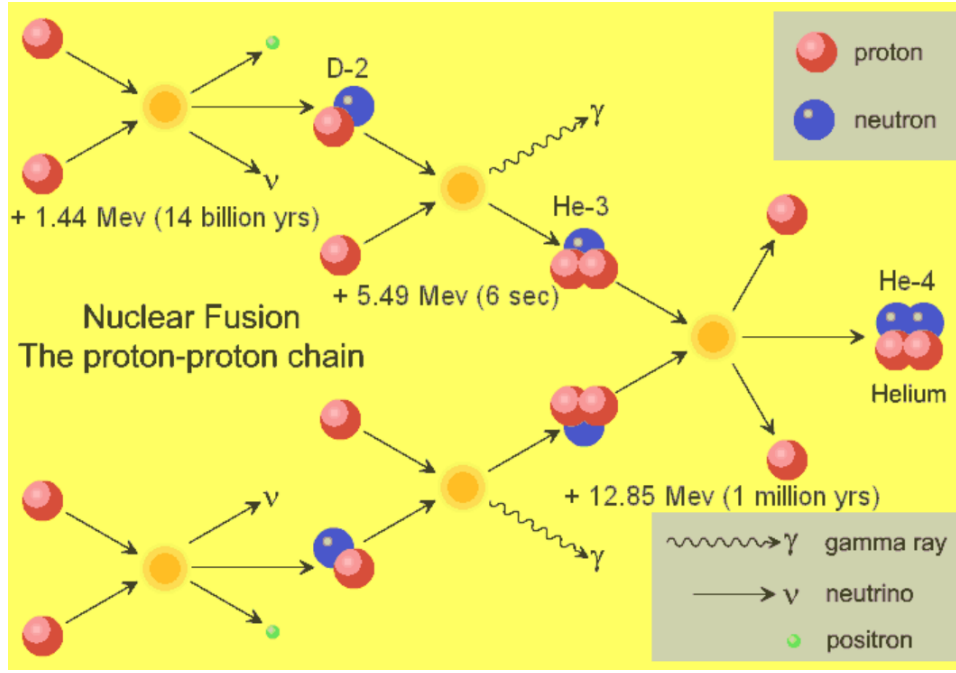


Figure 4: Nuclear decay chain in the Sun.

In figure 4 we show the nuclear fusion chain in the sun: from just protons we get ${}^4\text{He}$, with a release of 26.73 MeV.

To get a high yield in nuclear fusion we need a kinetic energy on the order of 10 keV, which corresponds to very high temperatures.

7 Deuteron

It is the only two-nucleon bound state; it has a *total* energy of 2.224 MeV

Its rms radius is around 2 fm, its spin-parity is $j^\pi = +1$, its magnetic moment is $\mu = 0.86\mu_N$.

It just has one degree of freedom, to study we only need the radial coordinate between the two nucleons: we assume our wavefunction to be in the form

$$\psi(r, \Omega) = \frac{u(r)}{r} Y_{ml}(\Omega) \quad (7.1)$$

where Ω is a pair of angles describing the relative position of the particles: $\vec{r} = (\vec{r}_1 - \vec{r}_2)/2$ is described by (r, Ω) . The radial part of the Schrödinger equation is

$$-\frac{\hbar^2}{2\mu} \frac{d^2 u}{dr^2} + \left(V(r) + \frac{\hbar^2 l(l+1)}{2\mu r^2} \right) u(r) = E u(r) \quad (7.2)$$

with $\mu = m_n m_p / (m_n + m_p) \approx m_p / 2$. This comes from the fact that

$$P^2 = \frac{L^2}{r^2} - \hbar^2 \frac{1}{r} \frac{\partial^2}{\partial r^2} r \quad (7.3)$$

We model the potential as a well: then the (reduced) wavefunction u will look like $\sin(r)$ up to the end of the well, and $\exp(-r)$ after it, with wavevectors like $k_{\text{in}} = i\sqrt{2m(V_0 + E)/\hbar^2}$ and $k_{\text{out}} = \sqrt{-2m(E)/\hbar^2}$ as argument of the exponential.

Spin coupling The neutron and proton have either 0 or 1 as total spin S , and they are both even under spatial parity. The angular wavefunction has momentum L , and parity equal to $(-)^L$. Then, since we know that for the full deuteron $j^\pi = +1$

$$(+) (+) (-)^L = (+) \quad 1 = \vec{L} + \vec{S} \quad (7.4)$$

The first equation implies $L \in 2\mathbb{N}$. By the other, if $S = 0$ then $L = 1$, which cannot be. So $S = 1$, but this means $1 = \vec{1} + \vec{L}$, so $0 \leq L \leq 2$, therefore $L = 0, 2$.

By the Hund rule, we expect the state with the lower angular momentum (3S_1) to be the ground state.

With our newly found ground state we can compute expectation values, like the one of

$$\vec{\mu} = \frac{e\hbar}{2m} \vec{L} + \sum g_S \mu_N \vec{S} = (g_L^p + g_L^n) \mu_N \vec{L} + (g_S^p \vec{S}_p + g_S^n \vec{S}_n) \mu_N \quad (7.5)$$

We know the values of the g factors.

In the ground state we expect $S = 0$, $L = 0$, and our particles have $s = 1/2$, therefore the expectation value will be $\langle \psi | \vec{\mu} | \psi \rangle = \frac{1}{2} (g_S^p + g_S^n) \mu_N$.

This is close to the true value but the measurement can be made very precisely, and the theoretical value does not hold up.

This is due to our hypothesis that the ground state is $|L = 0\rangle$ not being completely correct: the state is really a linear combination of mostly $|L = 0\rangle$ with a bit of $|L = 2\rangle$.

This suggest the existence of a tensorial term in the binding force, which mixes different angular momentum eigenstates. This is confirmed by the measurement of the quadrupole moment $Q \approx 3 \text{ meb}$, which could not be nonzero if the ground state had only $L = 0$.

8 Shell model

Allows us to explain the magic numbers, and to model excited nuclear states.

We work assuming all but one of the nucleons just form the *core* with its mean field, and just work with the outermost nucleon in this mean field: $\hat{H}_{\text{single particle}} = p^2/2m + U_{\text{mean}}(r)$.

Evidence The plots of the separation energies for a neutron or a proton have dips at 1+ a magic number (of protons / of neutrons).

The residuals from the SEMF also have dips at magic numbers.

The magic numbers are 2, 8, 20, 28, 50, 82, 126. 40 is less magic.

Parabolic potential Our first idea is to Taylor expand the potential (wrt position): we have a constant term, the first derivative is zero, the second derivative gives us the harmonic term: so we have a Hamiltonian like $\hat{H} = \frac{1}{2m} p^2 + \frac{1}{2} m x^2 \omega^2$.

Since it is a 3d oscillator, the energies look like $E_N = (N + \frac{3}{2}) \hbar \omega$, with $N = \sum_i n_i$. This is in cartesian coordinates, in polars instead we can write $N = 2(n_r - 1) + L$, with $L \leq N$.

It can be shown with a group theory argument that the angular momentum must have the same parity as N .

Then the total degeneracy is

$$D(N) = \sum_{\substack{L \leq N \\ N+L \equiv 0 \pmod{2}}} 2(2L+1) \quad (8.1)$$

since for every L we can have $2L+1$ values of L_z and for each of those two spin configurations.

This works up to around $Z = 20$, then we need to include some corrections.

Woods-Saxon potential It is a better approximation of the real potential than the parabolic one: it looks like the density function but with its sign flipped, so:

$$V_{\text{WS}} = \frac{-V_0}{1 + \exp\left(\frac{r-r_0}{a}\right)} \quad (8.2)$$

with $V_0 \approx 57 \text{ MeV}$, $r_0 \approx 1.25 \text{ fm} A^{1/3}$, $a \approx 0.65 \text{ fm}$.

Spin-orbital correction It is a perturbation to the total Hamiltonian of the form $L \cdot S = \frac{1}{2}(J^2 - L^2 - S^2)$ which, somewhat *ad hoc*, we multiply by a radial function.

$$E_{\text{spin-orbital}} = k \frac{dV_{\text{WS}}}{dr} L \cdot S \quad (8.3)$$

Other corrections The proton potential well will be higher than the neutron one, and it will have Coulomb tails. There will also be an LL coupling term.

Excitations The number of possible excited states grows with A , because they depend on the j coupling. They can be formed in various ways: photoexcitation, inelastic scattering, or the nucleus can decay into an excited state.

How to calculate the ground state Look at figure 5 and start filling the neutron and proton shells separately. Hopefully you get to a configuration close to a full shell, then j^π can be calculated by looking at the single additional or missing nucleon(s).

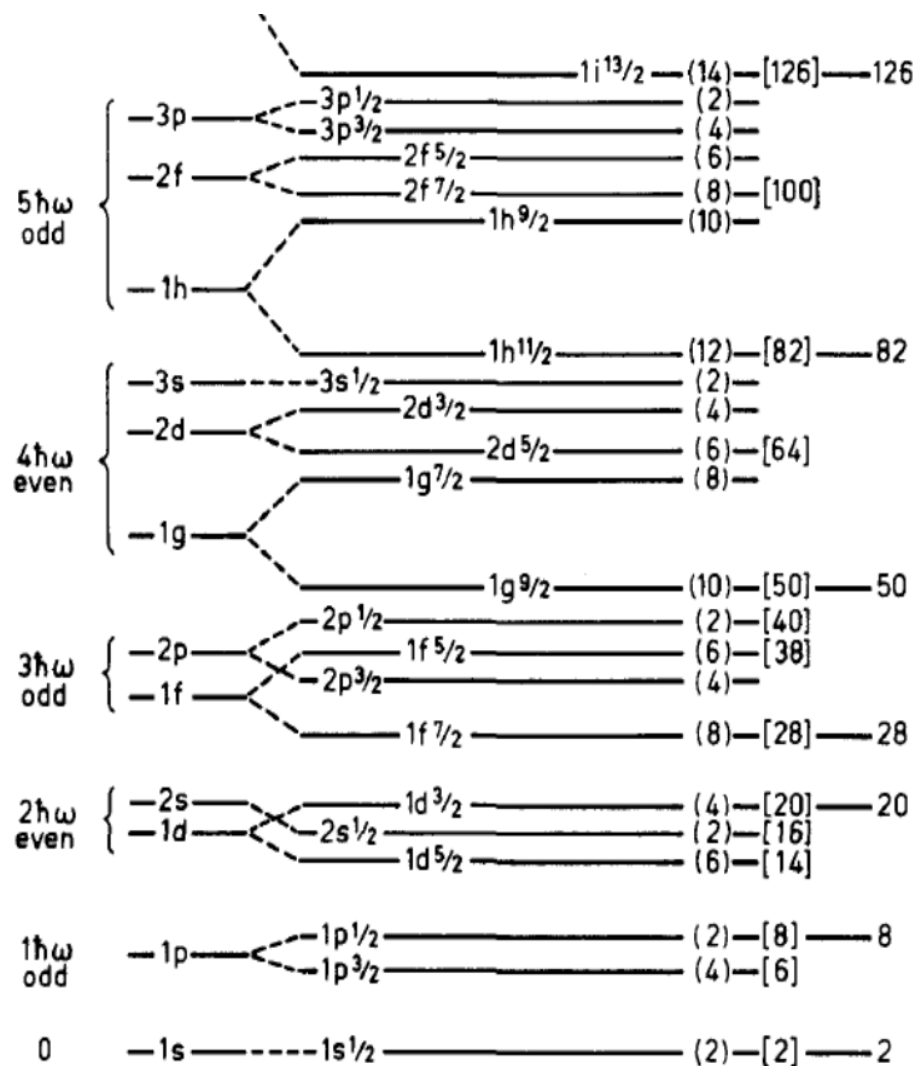


Figure 5: One-particle orbits

9 Collective model

It is used to describe the vibrations of the nucleus. In full generality, the angular distribution of the radius will look like

$$R(\theta, \varphi) = R_0 \left(1 + \sum_{l=0}^{\infty} \sum_{m=-l}^l \alpha_{lm} Y_{lm}(\theta, \varphi) \right) \quad (9.1)$$

where the Y_{lm} are the normalized spherical harmonics (functions $Y : S^2 \rightarrow \mathbb{C}$ which satisfy $\nabla^2 Y = 0$, $L^2 Y_{lm} = \hbar^2 l(l+1)$, $L_z Y_{lm} = \hbar m$).

The term α_{00} is only relevant at very high energies (it is spherically symmetrical compression/expansion). The term α_{1m} correspond to translation, not an intrinsic vibration. So, we look at the quadrupole term, α_{2m} .

We can perform a rotation $\alpha_{2\mu} \rightarrow a_{2\mu}$ using the Wigner matrices¹ to go into a frame where $a_{21} = a_{2(-1)} = 0$ and $a_{22} = a_{2(-2)}$. We parametrize the nonzero a s as $a_{20} = \beta \cos(\gamma)$, $a_{2(\pm 2)} = \beta \sin(\gamma)/\sqrt{2}$. We used up 3 of the 5 dimensions for this.

The parameter $\beta = \sum |a_{2m}|^2$ describes the magnitude of the deformation, the parameter γ describes its direction: it can be shown that

$$R_k = R_0 \left(1 + \frac{5}{4\pi} \beta \cos\left(\gamma + \frac{2}{3}\pi k\right) \right) \quad (9.3)$$

where $k = 1, 2, 3$.

We write the Hamiltonian of the oscillation with respect to the parameters $\alpha_{2\mu}$: the corresponding momenta are $\partial/\partial\alpha_{2\mu} = \pi_{2\mu}$. Modelling the low-energy vibrations as a harmonic oscillator we get

$$H = \frac{\pi_{2\mu} \pi_{2\mu}^\dagger}{2B} + \frac{C}{2} \alpha_{2\mu} \alpha_{2\mu}^\dagger \quad (9.4)$$

and we have expressions for B, C .

The solutions for the Hamiltonian (9.4) can be shown to have energy $E = (\sum_\mu n_\mu + 5/2)\hbar\omega$, with $\omega = \sqrt{C/B}$. This formula implies the presence of degeneracy, but this is partially removed when introducing perturbations.

We can express the energy quantum number wrt the parameters β and γ : $\sum_\mu n_\mu = 2n_\beta + \tau$, where $\tau(\tau+3)$ is the eigenvalue of the Casimir operator on $SO(5)$.

10 α decay

α particles are ${}^4\text{He}$ nuclei. That configuration has a particularly high binding energy per nucleon. The reaction in α decay looks like

$${}_Z^A X \rightarrow {}_{Z-2}^{A-4} Y + \alpha \quad (10.1)$$

For it to happen, we must have $M(A, Z) > M(A-4, Z) + M(4, 2)$. We can expand this in terms of the binding energies, and see that it will happen only for nuclei for which B/A is decreasing with A . The difference in energy between X and $Y + \alpha$ is denoted as Q . Since the velocities are not relativistic, the energy can be written as $Q = p_\alpha^2/2m_\alpha + p_Y^2/2m_Y$, and since $m_\alpha \ll m_Y$ but $|p_\alpha| = |p_Y|$ the energy is almost all kept by the α .

Different decays have wildly different half-lives: the empirical law they follow is called the *Geiger-Nuttal* (10.2). It is very closely followed if we fix an even Z and vary N keeping it even as well.

$$\log(t_{1/2}) \propto ZQ^{-1/2} \quad (10.2)$$

This can be understood with quantum tunneling. First of all, we assume the α can be spontaneously formed inside the nucleus as a cluster since it is a stable configuration, with some probability $\mathbb{P}_{\text{formation}} = |\langle \psi(A, Z) | (|\psi(A-4, Z-2)\rangle \otimes$

¹They are the matrix elements of rotations with respect to the harmonics:

$$\mathcal{D}_{mm'}^j(\alpha, \beta, \gamma) = \langle jm' | \exp(-i\alpha J_z) \exp(-i\beta J_y) \exp(-i\gamma J_z) | jm \rangle \quad (9.2)$$

Then, this α will collide with the nucleus border at some rate, which we estimate as $f = 2r/v$. A very rough estimate gives $1/f \sim \hbar/\text{MeV} \approx 200 \text{ MeVfm}/(c\text{MeV}) \approx 10^{-21} \text{ s}$.

So, we have to understand what happens at the nucleus border. We model the potential as a well, flat inside the nuclear radius R ; outside, the α will feel the Coulomb repulsion of the nucleus

$$V(r) = \frac{e^2}{4\pi\epsilon_0} \frac{Z_Y Z_\alpha}{r} [r \geq R] - V_0 [0 \leq r < R] \quad (10.3)$$

Where $[\cdot]$ is the Iverson bracket.

The α can tunnel through the potential barrier: how likely is it to do so? Let us call this probability T . We can calculate it modelling our potential as many infinitesimal rectangular slices, let us also call $r = b$ the point at which $V(r) = Q$. Then,

$$T = \exp \left(-2 \int_R^b \sqrt{\frac{2m(V(r) - Q)}{\hbar^2}} dr \right) \quad (10.4)$$

since we know the wavefunction to be exponentially depressed as $\exp \left(-\Delta r \sqrt{2m(V - Q)/\hbar^2} \right)$ for a constant $V > Q$ and finite Δr , so we make Δr small and then we multiply together all the infinitesimal exponential probability decreases. The factor 2 comes from the fact that, to get the probabilities, we must take the square modulus.

This can be analytically calculated: if $T = \exp(-2G)$, then

$$G = 2 \frac{Ze^2}{\hbar c} \sqrt{\frac{2m_\alpha c^2}{Q}} \left(\arccos \left(\sqrt{\frac{Q}{B}} \right) - \sqrt{\left(\frac{Q}{B} \right) \left(1 - \frac{Q}{B} \right)} \right) \quad (10.5)$$

In the end, we can calculate the rate of decay as $\lambda = \mathbb{P}_{\text{formation}} T f$. As always, the decay law is $N(t) = N_0 \exp(-\lambda t)$.

The orders of magnitude at play are as follows: $\mathbb{P}_{\text{formation}} \sim 1$, $f \sim 10^{21} \text{ Hz}$, $G \sim 30 \div 50$.

11 β decay

A nucleon has its isospin flipped, emitting a e^\pm and an electronic (anti)neutrino. This type of decay is due to the weak interaction.

Since it is a three-body process, we get a continuous spectrum of energies for the electron/positron.

Fermi theory Our assumptions are:

1. we neglect the Coulomb interaction between the electron and the nucleus (this will have to be reconsidered, since it only gives accurate predictions for $Z < 10$);
2. we neglect the recoil of the nucleus after the decay (the mass differences are very large: this will always work);
3. we assume $m_\nu = 0$;
4. we assume the distribution of energy partitions between the electron and neutrino to be uniform.

Fermi's golden rule The rate λ of a transition is given by

$$\lambda = \frac{2\pi}{\hbar} |M|^2 \frac{dn}{dE} \quad (11.1)$$

where $M = \langle \psi_f | H | \psi_i \rangle$ is the matrix element between the initial and final states, H being the Hamiltonian due to which the transition happens, dn/dE is the differential phase volume corresponding to the energy E . Note that H is dimensional, it is an energy!

State density Recall the momentum dependence of the density of states from equation (4.8). Then

$$dn = \left(\frac{4\pi V}{h}\right)^3 p_e^2 dp_e p_\nu^2 dp_\nu \quad (11.2)$$

The total energy is $E_0 = E_e + E_\nu$. We work at a fixed electron energy and momentum: so because of condition 3, $E_\nu = p_\nu c$, therefore $dp_\nu = dE_0 / c$ and $p_\nu^2 = (E_0 - E_e)^2 / c^2$. So we get

$$dn = \left(\frac{4\pi V}{h}\right)^3 \frac{dE_0}{c} \frac{(E_0 - E_e)^2}{c^2} p_e^2 dp_e \quad (11.3)$$

Calculation of λ We can plug this (with the dE_0 brought to the left hand side) into equation (11.1), but we still have a differential to the right and we fixed p_e , so we will not obtain λ but the $d\lambda$ from this momentum to $p_e + dp_e$.

$$d\lambda = \frac{2\pi}{h} |M|^2 \left(\frac{4\pi V}{h}\right)^3 F(Z_Y, E_e) \frac{(E_0 - E_e)^2}{c^3} p_e^2 dp_e = |M|^2 \frac{(4\pi V)^3}{c^3 h^4} F(Z_Y, E_e) (E_0 - E_e)^2 p_e^2 dp_e \quad (11.4)$$

We get λ by integrating this expression. We also added a factor to account for the asymmetry between electrons and positrons: the former are slowed down by electrostatic attraction when leaving the nucleus, the latter are accelerated. So, we multiply λ by $F(Z_Y, E_e) = 2\pi\eta / (1 - \exp(-2\pi\eta))$, where $\eta = \mp \alpha Z_Y / \beta_e$, α being the fine-structure constant.

$$\lambda = |M|^2 \frac{(4\pi V)^3}{c^3 h^4} F(Z_Y, E_e) \int (E_0 - E_e)^2 p_e^2 \left[0 \leq (p_e c)^2 \leq E_0^2 - m_e^2 c^4\right] dp_e \quad (11.5)$$

Fermi-Kurie plot Flipping equation (11.4) around, we find that

$$K(E_e) = \sqrt{\frac{d\lambda}{dp_e} F^{-1} p_e^{-2}} \propto E_0 - E_e \quad (11.6)$$

a testable prediction, which is experimentally verified. Sometimes we get sums of different lines (in the limit in which the K s are additive? maybe we can say that the $d\lambda$ s are additive and small so we make it work...).

If we had $m_\nu \neq 0$, the K plot would no longer be linear in E_e (instead of $p_\nu^2 = (E_0 - E_e)^2 / c^2$ we would have had $p_\nu^2 = (E_0 - E_e) \sqrt{(E_0 - E_e)^2 - m_\nu^2 c^4} / c^2$). This allows us to measure the neutrino mass.

From equation (11.5) we can calculate $ft \stackrel{\text{def}}{=} F(Z_Y, E_e) \log(2) / \lambda$. This is known as the ft value: it gives an estimate of $|M|^{-2}$. We usually plot its base-10 logarithm, since it varies through many orders of magnitude.

Calculating the matrix element We assume the interaction Hamiltonian is in the form $H = g \delta^3(r_e - r) \delta^3(r_\nu - r)$. In the calculation of M this will make all the integrals in the same variable, r . g 's value cannot be determined theoretically, experimentally $g \approx 10^{-4} \text{ MeV fm}^3$. We must evaluate an expression as follows:

$$M = \int \psi_\nu^* \psi_e^* \psi_{\text{nuc-f}}^* \psi_{\text{nuc-i}} dr \quad (11.7)$$

where all the wavefunctions are evaluated at r . If the electron and neutrino wavefunctions are planar waves, say $\psi_e = \exp(-ipr/\hbar) \sim 1 - ipr/\hbar + o(r)$. But we integrate only over the support of the nuclear wavefunctions: let us assume $r = r_0 A^{1/3} \approx 3 \div 5$ and $p = \sqrt{E_e^2 / c^2 - m_e^2 c^2} \approx 1 \text{ MeV} / c$. Then we see that the first order term is negligible. We do this for the electron and neutrino, getting $M = g \langle \text{nuc-f} | \text{nuc-i} \rangle / V$, where V is the volume we assume the electron and neutrino wavefunctions are normalized to have support in.

This is equivalent to assuming $p \wedge r = L = 0$ for the electron and neutrino.

Transition types We call the nuclear angular momentum I , the leptons' total angular momentum and spin L and S . Then

$$\vec{I}_i = \vec{I}_f + \vec{L} + \vec{S} \quad (11.8)$$

we distinguish

1. Fermi transitions: $S = 0$.
2. Gamow-Teller transitions: $S = 1$.
1. Permitted transitions: $\Delta L = 0$, they also have no change in parity since $\Delta\pi = (-)^{\Delta L}$. They are the ones we described in the last paragraph.
2. Super-permitted transitions: the starting and ending nuclear configurations are almost identical. This happens with specular nuclei. $\log_{10}(ft) \sim 3.5$.
3. Prohibited transitions (of various orders): every additional term in the expansion of the lepton wavefunctions depresses $|M|^2$ by a factor 10^4 , so they get increasingly unlikely.

12 γ decay

γ radiation is almost monochromatic, since excited states usually live for around $10^{-12} \text{ s} \approx 1/6.6 \times 10^{-4} \text{ eV}$; its wavelength is also much longer than the nucleus.

The energy lost from the excited state is almost all with the γ : if we assume that energy and momentum are conserved we get $\Delta E = E_\gamma - E_\gamma^2/(2M)$ since $E_\gamma = p_{\text{recoil}}$. The solution of this is:

$$E_\gamma = M \left(-1 \pm \sqrt{1 + \frac{\Delta E}{M}} \right) \approx \Delta E - \frac{\Delta E^2}{M} \approx \Delta E \quad (12.1)$$

Selection rules We must have $\vec{I}_i = \vec{I}_f + \vec{L}$, and the angular momentum of the photon must be nonzero. Also, let us call EL the electric (due to moving charge) radiation with momentum L and ML the analogous magnetic (due to moving current) radiation. We call it 2^L -pole radiation. Then it can be shown that

$$EL \iff \Delta\pi = (-)^L \quad ML \iff \Delta\pi = (-)^{L+1} \quad (12.2)$$

Emitted power Let us compare the emitted power to the first order of an electric dipole d vs a magnetic dipole μ , using the EM-fields formulas: $P(E1) \sim \omega^4 d^2/c^3$, while $P(M1) \sim \omega^4 \mu^2/c^5$. In general, denoting $\sigma = E, M$:

$$P(\sigma L) = \frac{2c}{\epsilon_0} \frac{(L+1)}{L((2L+1)!!)^2} \left(\frac{\omega}{c} \right)^{2L+2} \mathcal{M}(\sigma L)^2 \quad (12.3)$$

where \mathcal{M} can be interpreted, in a quantum setting, as a *transition amplitude*, whose square modulus is a transition probability. To calculate \mathcal{M} we should use the multipole operators, which for the electric transitions are $O(EL) = e r_i^L Y_{i,LM}$ (i labels the particles in the nucleus) while the magnetic ones are much more complicated.

In general, $\mathcal{M}(\sigma L) = \langle \psi_f | O(\sigma L) | \psi_i \rangle$. Dimensionally, $[\mathcal{M}] = C m^L$.

We can find the rate of photon emission as $T(\sigma L) = P(\sigma L)/\hbar\omega$.

$$T(\sigma L) = \frac{8\pi\alpha c(L+1)}{e^2 L(2L+1)!!^2} \left(\frac{\omega}{c} \right)^{2L+1} |\mathcal{M}(\sigma L)|^2 \quad (12.4)$$

Weisskopf estimations Instead of the multipole operators, we use brutal estimates (the radial wavefunctions are proportional to $[r \in \text{nucleus}]$, the angular integrals are 1):

$$|\mathcal{M}(EL)|^2/e^2 = \frac{1}{4\pi} \left(\frac{3}{3+L} \right)^2 (r_0 A^{1/3})^{2L} \quad (12.5a)$$

$$|\mathcal{M}(ML)|^2 \propto \left(\frac{3}{3+L} \right)^2 (r_0 A^{1/3})^{2L-2} \quad (12.5b)$$

The ratio of the magnetic to electric matrix square element is something like $0.31 A^{-2/3} \sim 10^{-2}$. The take-away is: when L increases by 1, the transition probability decreases by a factor $10^4 \div 10^5$.

In the end, setting $R = r_0 A^{1/3}$, we get

$$T(EL) \approx \frac{2\alpha(L+1)}{L(2L+1)!!^2} \left(\frac{\omega}{c}\right)^{2L+1} \left(\frac{3}{3+L}\right)^2 R^{2L} \quad (12.6)$$

Around magic numbers this prediction is close to being verified; mid-shell we see tens or hundreds more than it. The half-life of the decay is given by $t_{1/2} = \log(2)/T$

Experimental methods We can experimentally determine the parity of a Γ transition: we look at the differential cross section $d\sigma/d\theta$ wrt the azimuth angle θ , if it is odd then the change in parity is $(-)$, if it is even the change in parity is $(+)$.

Also, we can look at the number of nodes $d\sigma/d\theta$, which will be equal to the order of the Legendre polynomial of the radiation.

13 Matter and radiation

Cross sections The flux of particles $\varphi = \text{\#particles}/(At) = nv$ (where A is the area through which the particles pass, t is the time interval, n is the particle density and v is the velocity) decays like $\Delta\varphi = -\varphi\sigma n_t \Delta x$, where n_t is the particle density in the target, and the proportionality constant σ [m^2] is called the scattering cross section.

There are three types of interaction between photons and matter. Photoelectric is dominant at low energies, Compton at mid energies, pair production at high energies. As Z of the material increases, the Compton-dominance region shrinks (on a log plot, somewhat symmetrically around 1 MeV).

Photoelectric : $\sigma \sim Z^{4.5}/E_\gamma^3$, for $E_\gamma < 400$ keV.

Compton : continuous spectrum,

$$E'_\gamma = \frac{E_\gamma}{1 + (E_\gamma/m_e c^2)(1 - \cos(\theta))} \quad \text{or} \quad \frac{1}{E'_\gamma} - \frac{1}{E_\gamma} = \frac{m}{1 - \cos(\theta)} \quad (13.1)$$

Remember: the initial electron mass goes into the energy count! The maximum energy transferred to the electron is at $\theta \rightarrow \pi$, $E'_\gamma - E_\gamma \rightarrow m_e c^2/2$.

Pair production Near a nucleus, we can have some momentum transfer and see $\gamma \rightarrow e^- + e^+$.

α particle energy transfer The collision is elastic and the α 's mass is much larger than the electron's: the energy transferred is approximately

$$E_e = \frac{4m_e E_\alpha}{M_\alpha} \quad (13.2)$$

so, for a regular α , in the single keV range.

Bethe-Bloch It describes the *stopping power* dE/dx of a particle in a medium. We use the following assumptions: the particle has mass M , charge ze , velocity v , the impact parameter wrt the medium electrons is b , the material has Z, A . Imagine a very long cylinder centered around the particle: by Gauss, ignoring the circular faces,

$$\frac{ze}{\epsilon_0} = \int E_\perp dx b d\theta = \int eE 2\pi b dx \quad (13.3)$$

The momentum transferred to the electron is the integral of $dp_\perp = F_\perp dt = eE_\perp dt$. Also, recall $dt = dx/v$. Then

$$\Delta p_\perp = \int eE dt = \int eE \frac{2\pi b dx}{2\pi b v} = \frac{ze}{\epsilon_0} \frac{e}{2\pi b v} \quad (13.4)$$

So, at fixed b and electron position, we can calculate $\Delta E = \Delta p^2/2m_e$.

But this will hold for all the electrons, and there are N of them, so $\Delta E_{\text{tot}} = N\Delta E$. We can write $N = nV$. If we have the density ρ , the (approximate) molar mass A , then $n = ZN_A\rho/A$ since there are Z electrons per atom. Also, $V = \int 2\pi b db dx$.

Putting it all together, and calculating the energy difference for the particle, which is minus that of the electron:

$$-\Delta E = \int \left(\frac{ze}{\epsilon_0} \frac{e}{2\pi bv} \right)^2 \frac{1}{2m_e} \frac{ZN_A\rho}{A} 2\pi b db dx \quad (13.5a)$$

$$-\frac{dE}{dx} = \left(\frac{ze^2}{4\pi\epsilon_0} \right)^2 \frac{4\pi ZN_A\rho}{m_e v^2 A} \int \frac{db}{b} \quad (13.5b)$$

$$-\frac{dE}{dx} = \left(\frac{ze^2}{4\pi\epsilon_0} \right)^2 \frac{4\pi ZN_A\rho}{m_e v^2 A} \log \left(\frac{m_e v^2}{h \langle \nu_e \rangle} \right) \quad (13.5c)$$

where we used $b_{\text{max}} = 2v / \langle \nu_e \rangle$, since if the time it takes the electron to oscillate ($1 / \langle \nu \rangle$) is larger than the time it takes the interaction to occur ($b/2v$, half of the path of the particle) then the electron will not behave as a point particle; also $b_{\text{min}} = h/p_e = h/(m_e v)$ since then the particle will pass *through* the electron, and quantum stuff will happen. We introduce $I = h \langle \nu \rangle$ as the ionization potential of the material, and some terms coming from relativistic considerations

$$S = -\frac{dE}{dx} = \left(\frac{ze^2}{4\pi\epsilon_0} \right)^2 \frac{4\pi ZN_A\rho}{m_e v^2 A} \left(\log \left(\frac{2m_e v^2}{I(1-\beta^2)} \right) - \beta^2 \right) \quad (13.6)$$

for energies between 100 keV and 1 GeV, the shape of the curve is roughly $S \propto E^{-0.8}$.

Range It is the distance travelled by the particle: we can compute it as

$$R = \int \frac{dx}{dE} dE = \int_0^{E_0} \frac{dE}{-S} \quad (13.7)$$

plugging in a rough version of formula (13.6) (we get this by dividing and multiplying by M , the mass of the particle): $S \approx azE^{-1} = 2azM/E$. Then

$$R \approx \frac{1}{2a} \frac{E_0^2}{z^2 M} \quad (13.8)$$